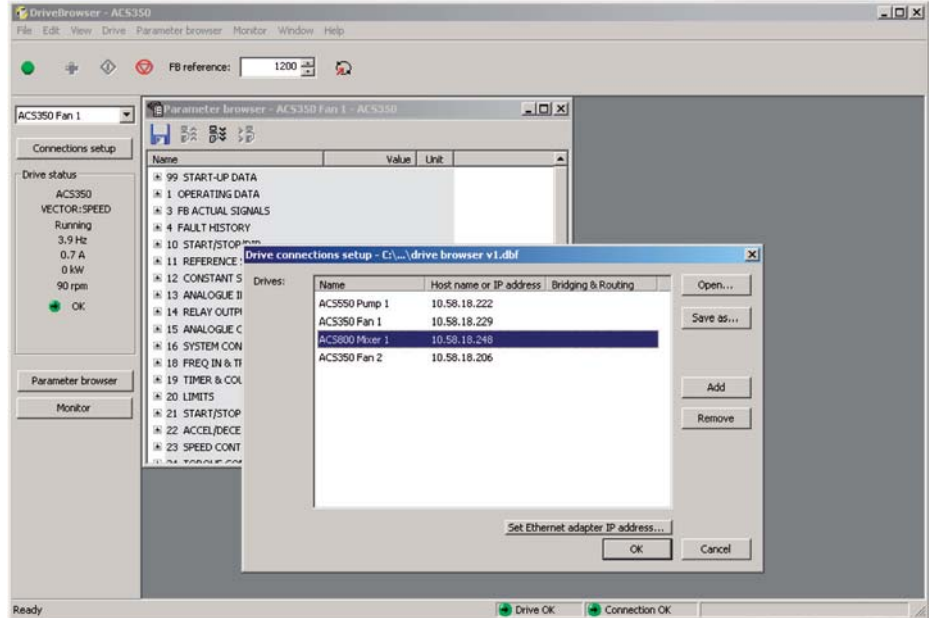


Drive PC tools

Start-up and maintenance

DriveBrowser

DriveBrowser is an Ethernet network based drive monitoring and tuning PC tool that supports low voltage machinery, standard, and industrial drives throughout their life cycle. It helps users monitor, maintain and set drive parameters on drives connected to an Ethernet network.



Shares the PLC network

Drives using an Ethernet adapter (RETA-01, RETA-02, or FENA-01) can share the same network where PLC's using Modbus/TCP or EtherNet/IP protocols are connected. This allows users to take advantage of installed networks and reduces additional cabling and infrastructure communication costs.

Drive startup and maintenance

DriveBrowser includes a parameter browser allowing users to view and set individual parameter values. Parameter sets that have been saved can be used to commission new drives. Additionally, users can compare parameter sets to quickly identify changes over time or changes in configurations. Drive signals are also displayed in the parameter browser.

Monitor throughout the drives life cycle

The monitor functionality enables users to graphically view signals and parameters while the drive is running. Users select the parameters and signals and set the graph's minimum and maximum values. The resulting display shows each selected value on a graph while the drive is operating. This data can be used to tune the drive for improved performance. The collected data can be saved to a file.

Quickly assess drive status

The drive status window displays the drives current status, showing the drives control mode, operation status, output frequency, current, power, speed, and the drive state.

Identify drives easily

Once the installed drives are connected to the network using a fieldbus adapter, users may assign meaningful names to each connected drive and identify drives by type.

PC based drive control

DriveBrowser provides a built-in drive control panel allowing users to reset faults, start, stop, set the direction, and speed reference values of the connected drive. This functionality may be disabled if the controlling PLC does not allow it for networks that are controlled by a PLC.

Highlights

- View and set parameters
- Monitor signals graphically and numerically
- Upload/ download drive parameters
- Uses Ethernet network
- Give easily recognizable names to drives
- Control the drive from the PC
- Used throughout the drive's life cycle

Supported drives

- ACS350
- ACS355
- ACS550
- ACH550
- ACS800 *)

Connectivity options

- PC to drive via Ethernet. DeviceNet or ControlNet using gateway hardware.
- PC to drive via crossover cable and RETA-01 adapter

Supported operating systems

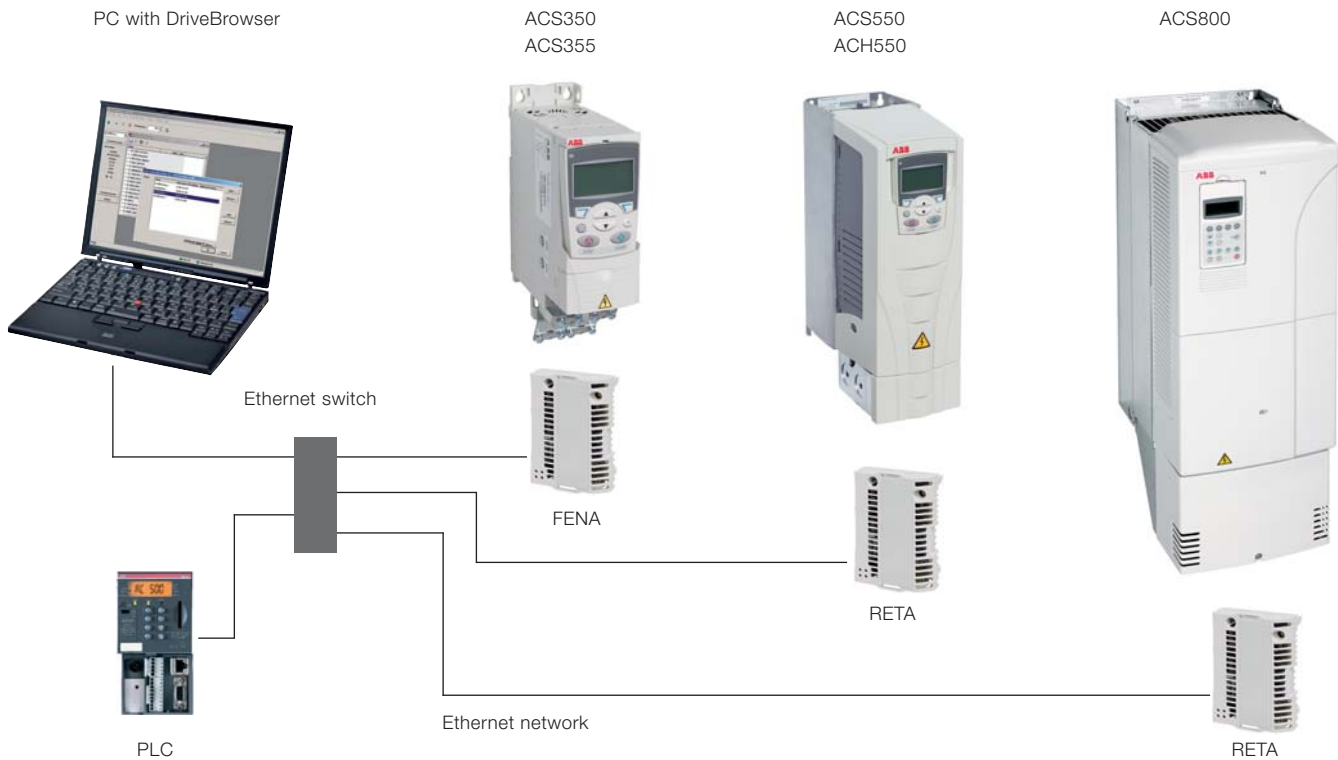
- Windows XP, Vista and Windows 2000

Ordering information and technical support

Contact your local ABB or visit www.abb.com/drives and select the link for Drive PC Tools.

Email: drive.care@fi.abb.com

*) Standard control program only.



PC connected to drives using the same Ethernet network as the PLC.

For more information please contact:

www.abb.com/drives

www.abb.com/drivespartners

© Copyright 2009 ABB. All rights reserved.
Specifications subject to change without notice.